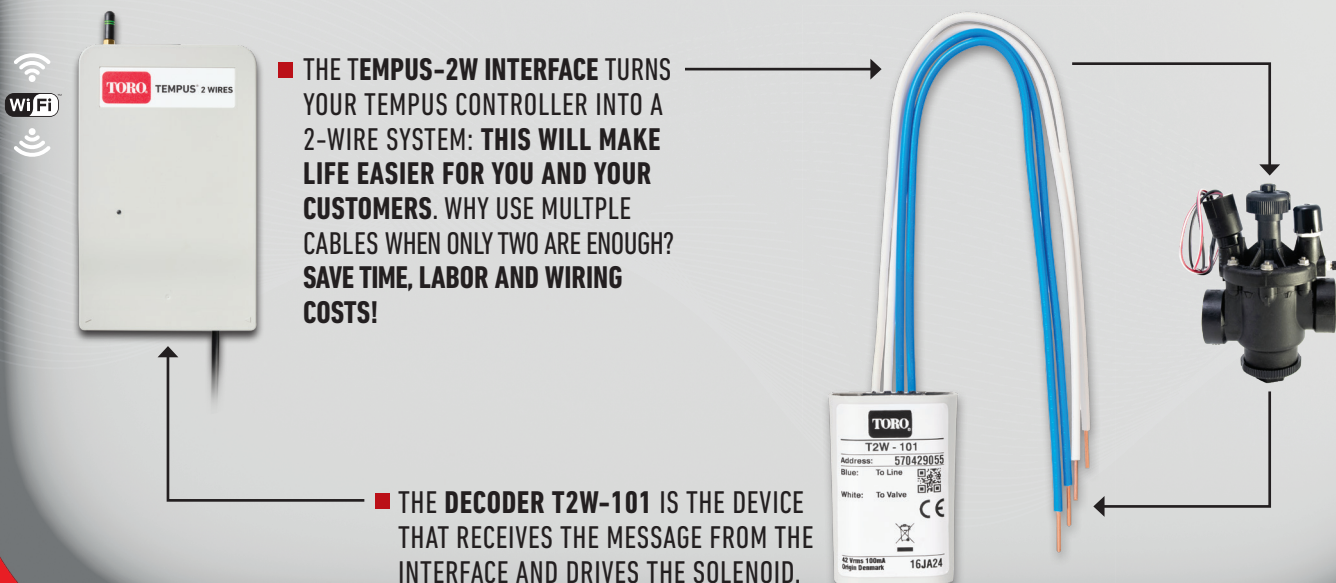


# TORO®

**THE NEW TEMPUS DECODER SYSTEM REPRESENTS AN UNIQUE SOLUTION ON THE MARKET: IT IS THE ONLY DECODER SYSTEM THAT WORKS IN WI-FI CONNECTION**



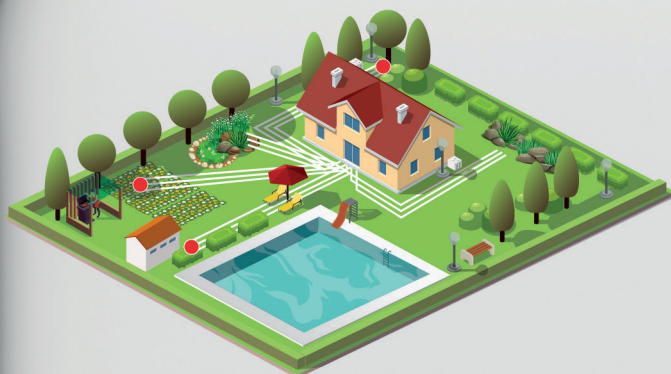
THIS SYSTEM ALLOWS TO MANAGE UP TO **48 STATIONS** WITH A SINGLE CONTROLLER AND **EXPANDING THE SYSTEM IS SIMPLE**: IT IS ALWAYS POSSIBLE TO ADD NEW DECODERS AT A LATER TIME. THE **TEMPUS DECODER SYSTEM** HAS TWO MAIN COMPONENTS: **THE INTERFACE AND THE DECODERS**.



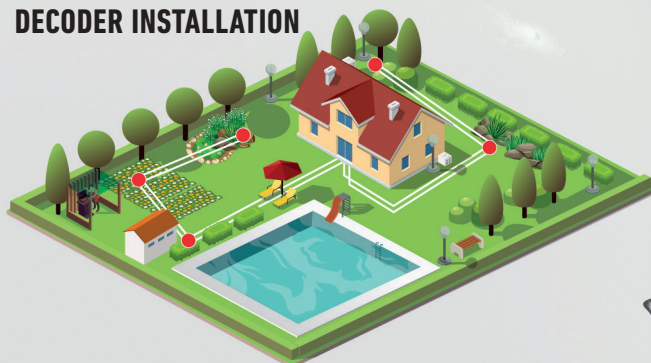


# TORO®

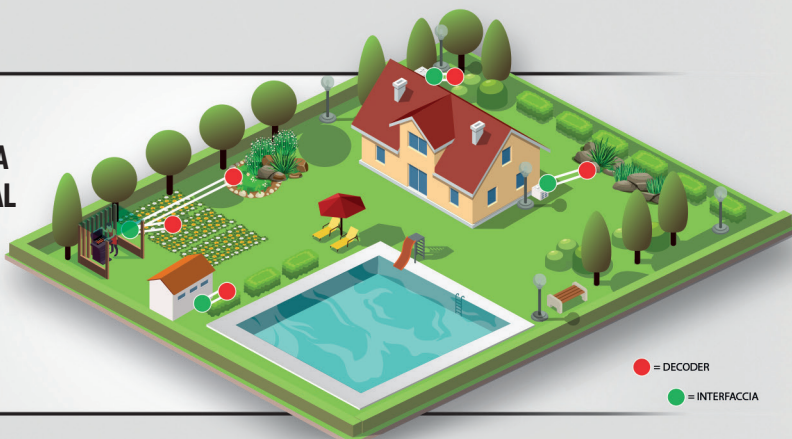
## ■ EXAMPLE OF N+1 INSTALLATION



## ■ EXAMPLE OF STANDARD DECODER INSTALLATION



- THE TEMPUS SOLUTION REPRESENTS A CHEAPER ALTERNATIVE TO TRADITIONAL DECODER SYSTEMS (INSTALLATION REQUIRES UP TO 80% LESS CABLES THAN A CONVENTIONAL SYSTEM)



### TECHNICAL INFORMATION TEMPUS-2W

Input	100-240VAC, 50/60Hz, 400mA@230VAC 800mA@115VAC
Output	36VAC, 280mA
Storage	-40°C to +80°C, 10% to 95% RH. Do not store at extremes for extended periods of time
Operating	-20°C to +60°C, 20% to 90% RH, non-condensing. Do not operate in direct sunlight.
IP Rating	IP54, i.e., protected against dust and splashing water.

### FOR THE 2-WIRE PREFERABLY USE SOLID CONDUCTOR CABLE OF MINIMUM CROSS SECTION:

- For 1000 m cable use minimum 0,75 mm<sup>2</sup> (AWG 18)
- For 2000 m cable use minimum 1,50 mm<sup>2</sup> (AWG 15)
- For 3000 m cable use minimum 2,00 mm<sup>2</sup> (AWG 14)
- For 4000 m cable use minimum 2,50 mm<sup>2</sup> (AWG 13)

### CODE TEMPUS DECODER SYSTEM

Part Number	Description
TEMPUS-2W	Interface, 48-station for Tempus controller
T2W-101	Decoder, 1 station for Tempus decoder system
SPD	Surge Protection Decoder